

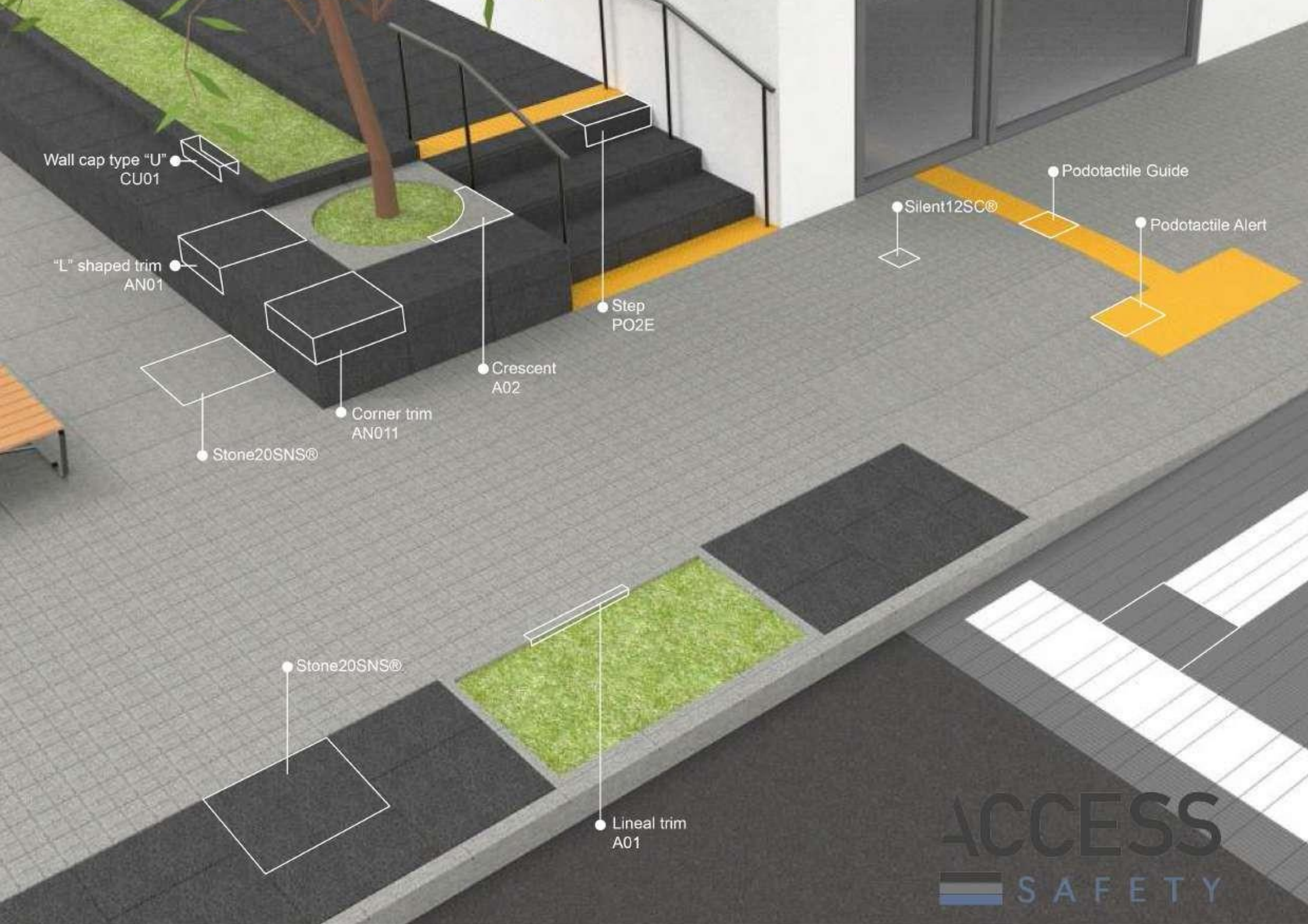
ACCESS

SAFETY

SINTERED PAVIMENT FOR
SUSTAINABLE CITIES

TECHNICAL SOLUTIONS





Wall cap type "U"
CU01

"L" shaped trim
AN01

Stone20SNS®

Stone20SNS®

Step
PO2E

Crescent
A02

Corner trim
AN011

Lineal trim
A01

Silent12SC®

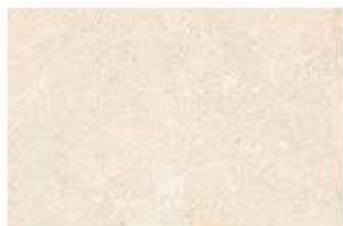
Podotactile Guide

Podotactile Alert

ACCESS
SAFETY

Stone^{20SNS}
SINTERED NATURAL STONE

Standar format: 20x30cm | 30x30cm | 60x60cm | 60x120cm - thickness 20



Egypt Limestone



Rushmore Granite



Pamukkale Limestone



Svartifoss Basalt



Lop Antracita



Sandstone Montjuic

Standar format: 20x20cm | 20x30cm



Porphyry Cotto



Porphyry Grigio

Tactile
TECHNICAL FULL-BODY

Standar format: 30x30cm - thickness 15 mm



Guide



Alert

Colors:



White



Yellow



Orange



Red



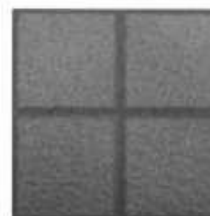
Grey



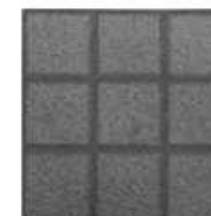
Black

Silent^{12SC}
SINTERED CONCRETE

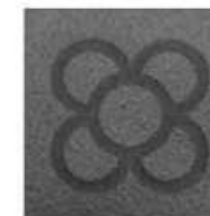
Standar format: 20x20 cm - thickness 12mm



4 Pills

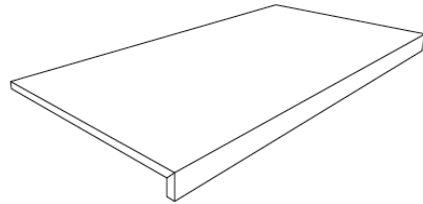
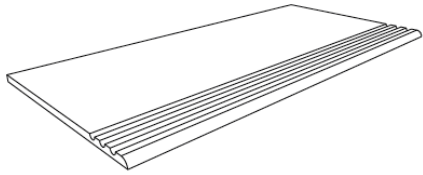


9 Pills

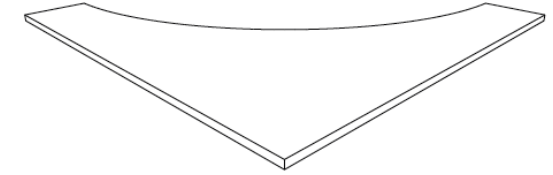
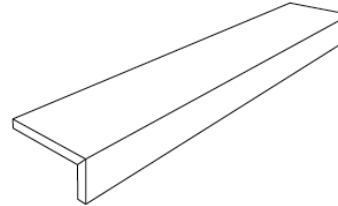


Flower

SPECIAL PIECES



SPECIAL PIECES



EDGE STEP

- P01 Lineal
- P01D Right corner
- P01I Left corner
- P01U Right + left corner
- P01E Linear striated
- P01DE Right corner striated
- P01IE Left corner striated
- P01UE Right striated + left striated

30x60cm · e= 1 a 2cm

FLAT STEP

- P02 Lineal
- P02D Right corner
- P02I Left corner
- P02U Right + left corner
- P02E Linear striated
- P02DE Right corner striated
- P02IE Left corner striated
- P02UE Right striated + left striated

30x60cm · e= 1 a 2cm · h= 4cm

LINEAL TRIM

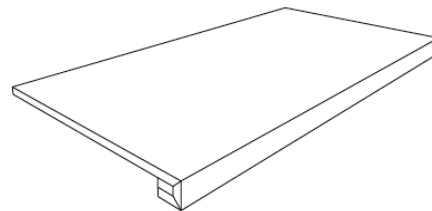
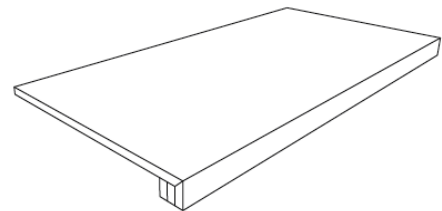
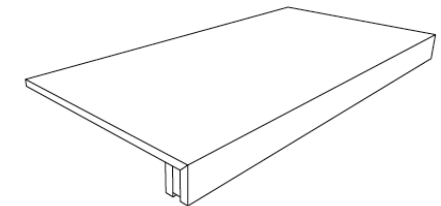
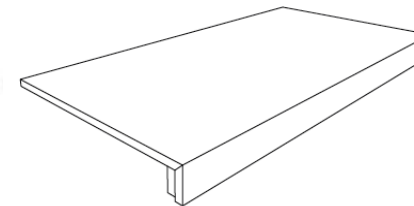
A01

5x60cm · e= 1 a 2cm · h= 4cm

CRESCENT TRIM

A02

60x60cm · e= 2cm



RAIN GUTTER REINFORCED

V01

30x60cm · e= 1 a 2cm · h= 5cm

RAIN GUTTER DOUBLE REINFORCED

V02

30x60cm · e= 1 a 2cm · h= 5cm

MITERED REINFORCED RUNG

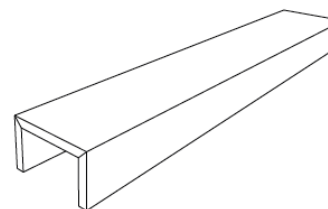
- P03 Lineal
- P03D Right corner
- P03I Left corner
- P03U Right + left corner
- P03E Linear striated
- P03DE Right corner striated
- P03IE Left corner striated
- P03UE Right striated + left striated

30x60cm · e= 1 a 2cm · h= 4cm

MITERED DOUBLE REINFORCED RUNG

- P04 Lineal
- P04D Right corner
- P04I Left corner
- P04U Right + left corner
- P04E Linear striated
- P04DE Right corner striated
- P04IE Left corner striated
- P04UE Right striated + left striated

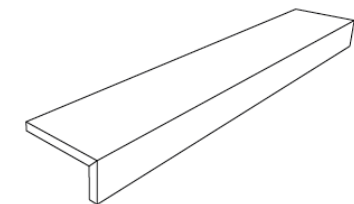
30x60cm · e= 1 a 2cm · h= 5cm



WALL CAP

CU01 Lineal

Personalized



ANGULAR TRIM

- AN01 Lineal
- AN01D Right corner
- AN01I Left corner
- AN01U Right + left corner

Personalized

Recommendations for Access Safety pavements laying in special thermal conditions

Pavements placed outdoors and transit areas may be subjected to large stresses both thermal and structural.

Safety Access pavements are specially designed to withstand such physical loads, but by the nature of its material, the correct laying of the pavement and the proper design of the construction system, ensure optimum performance and durability.

The most critical aspects to ensure this durability are the stability of the ground, the choice of the right adhesive and the temperature at the time of laying.

Ground stability

Sintered paving must always be laid on a rigid and non-deformable base, for which it is necessary to calculate the concrete or cement mortar base on which it must be laid.

It is essential to design the movement and structural joints of the project, necessarily defining:

- Perimeter movement joints at corners and changes of plane, height or material.
- Movement joints that form panels with a maximum surface area of 25 m² and 16 m² with dark colours on exteriors.

Adhesive type

Only adhesive type C2 for non-porous surfaces should be used.

Temperature when laying

Temperature of support material when laying should be always between +5°C and +40°C

If all the aspects described above have been scrupulously respected, Access Safety flooring can withstand extreme temperatures of between -30°C and +90°C with the common glue cement that is used in all the works of the Middle East. We recommend **Mapei Keraflex Easy S1** - check in technical data.

Construction stages:

Terrain analysis:

Before performing any stake in the action geotechnical studies must be performed to determine the terrain characteristics to choose the appropriate design to ensure the correct laying of the product.

Project adaptation and application of structural base:

Dimensions and shapes provided on plans should be reconsidered according to terrain qualities.

Once the soil is ready presenting the required compacting and levelling the structural support should be installed.

This structural support must be adequate to resist the expected loads. The structure must maintain its rigidity and stability without deforming or breaking. If necessary, the support should include steel lath or fiberglass, and structural elements to prevent the rise of water by capillarity.

Pavement laying:

When structural support has sufficient strength, a thin layer of adhesive type C2 should be placed using a square stainless-steel trowel.

If the surface should be used quickly, a C2F type can be the selected adhesive.

Joints between pieces will be 3 mm and it should be done with mortar grouting type CG2W.

ACCESS

SAFETY

www.access-safety.es
Calle Muntaner 438
08006 Barcelona
+931599825

Edition 001.22
7/7/2022

